

Nylite Assembly

Easily installed into or removed from a pre-made soft eye. Nylite spool is only 1/7th the weight of steel. Connectors will not deform or rupture from repeated loadings. The shackle takes advantage of the high-strength Nylite connector and synthetic rope.

WORKING DETAILS

- > Working loads listed are in tons (2,000 lb).
- > Working loads, as given, are based on pin-bore relationship provided by use of the Nylite Shackle. When using a non-standard pin, the working load as given DOES NOT APPLY.
- > The HP aluminum spool is available for use with high-performance Class II ropes in sizes -1 through -5.
- > Aluminum spools are not recommended for continuous use in submerged marine environments.
- > All working load values are based on a 4:1 safety factor.
- > Assembly ratings are based on the use of designated spools and shackles. Spools used in conjunction with other hardware are not rated by Samson.



NYLITE SPOOLS PRODUCT CODE: 969



CLASS I ASSEMBLY Nylite Assembly with Nylon Spool

Shackle Type	Product Code	Size	Shield Color	Fits Rope Diameter		Fits Rope Circumference		Samson Minimum Eye Size INCHES	Assembly Working Load TONS	Weight Each POUNDS	Fits Rope Diameter		Fits Rope Circumference		Samson Minimum Eye Size MM	Assembly Working Load METRIC TONS	Weight Each KG
				MIN.	MAX.	MIN.	MAX.				MIN.	MAX.	MIN.	MAX.			
Galvanized	964-0320	-1	Blue	3/8"	1/2"	1-1/8"	1-1/2"	2-3/16"	1.1 tons	0.50 lb	9 mm	12 mm	27 mm	36 mm	55.6 mm	1.0 mt	0.23 kg
Galvanized	964-0400	-2	Red	9/16"	5/8"	1-3/4"	2"	2-3/4"	1.6 tons	1.0 lb	14 mm	16 mm	42 mm	48 mm	68 mm	1.5 mt	0.45 kg
Galvanized	964-0520	-3	Green	3/4"	13/16"	2-1/4"	2-1/2"	3-3/4"	2.5 tons	1.6 lb	18 mm	20 mm	54 mm	60 mm	92 mm	2.3 mt	0.73 kg
Galvanized	964-0680	-4	Orange	7/8"	1-1/16"	2-3/4"	3-1/4"	4-7/8"	4.5 tons	3.8 lb	22 mm	26 mm	66 mm	78 mm	124 mm	4.1 mt	1.7 kg
Galvanized	964-0840	-5	Black	1-1/8"	1-5/16"	3-1/2"	4"	6-1/8"	7.5 tons	6.2 lb	28 mm	32 mm	84 mm	96 mm	156 mm	6.8 mt	2.8 kg
Galvanized	964-1120	-6	Yellow	1-1/2"	1-3/4"	4-1/2"	5-1/2"	7-5/8"	12.5 tons	19.0 lb	36 mm	44 mm	108 mm	132 mm	194 mm	11.3 mt	8.6 kg

-1 and -2 shackles are Electro Galvanized per ASTM B633-07 SC2 Type III. Sizes -3 through -6 shackles are Hot-Dip Galvanized per ASTM A123

CLASS II ASSEMBLY Nylite Assembly with HP Aluminum Spool

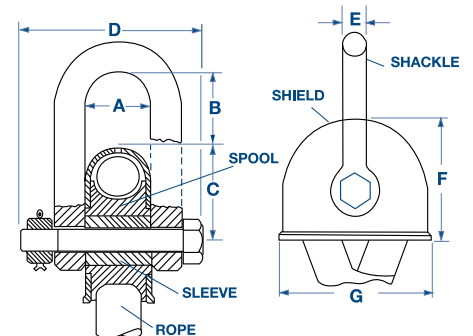
Shackle Type	Product Code	Size	Shield Color	Fits Rope Diameter		Fits Rope Circumference		Samson Minimum Eye Size INCHES	Assembly Working Load TONS	Weight Each POUNDS	Fits Rope Diameter		Fits Rope Circumference		Samson Minimum Eye Size MM	Assembly Working Load METRIC TONS	Weight Each KG
				MIN.	MAX.	MIN.	MAX.				MIN.	MAX.	MIN.	MAX.			
Galvanized	964-0321	-1	Blue	3/8"	1/2"	1-1/8"	1-1/2"	2-3/16"	2.7 tons	0.53 lb	9 mm	12 mm	27 mm	36 mm	56.6 mm	2.4 mt	0.24 kg
Galvanized	964-0401	-2	Red	9/16"	5/8"	1-3/4"	2"	2-3/4"	4.8 tons	1.1 lb	14 mm	16 mm	42 mm	48 mm	68 mm	4.4 mt	0.48 kg
Galvanized	964-0521	-3	Green	3/4"	13/16"	2-1/4"	2-1/2"	3-3/4"	5.8 tons	1.8 lb	18 mm	20 mm	54 mm	60 mm	92 mm	5.3 mt	0.79 kg
Galvanized	964-0681	-4	Orange	7/8"	1-1/16"	2-3/4"	3-1/4"	4-7/8"	11.5 tons	4.1 lb	22 mm	26 mm	66 mm	78 mm	124 mm	10.4 mt	1.9 kg
Galvanized	964-0841	-5	Black	1-1/8"	1-5/16"	3-1/2"	4"	6-1/8"	14.0 tons	6.8 lb	28 mm	32 mm	84 mm	96 mm	156 mm	12.7 mt	3.1 kg

-1 and -2 shackles are Electro Galvanized per ASTM B633-07 SC2 Type III. Sizes -3 through -5 shackles are Hot-Dip Galvanized per ASTM A123

Assembly Dimensions

Size	Spool Inside Dia.	Spool Outside Dia.	Pin Diameter*	A INCHES	B INCHES	C INCHES	D INCHES	E INCHES	F INCHES	G INCHES
-1	0.46"	1.50"	0.44"	0.88"	1.08"	1.11"	2.41"	0.38"	1.99"	2.34"
-2	0.58"	1.75"	0.56"	1.13"	1.21"	1.38"	3.11"	0.50"	2.38"	2.88"
-3	0.64"	2.25"	0.63"	1.38"	1.61"	1.77"	3.54"	0.56"	3.02"	3.70"
-4	0.89"	3.00"	0.88"	1.75"	1.90"	2.29"	4.70"	0.75"	3.79"	4.71"
-5	1.02"	3.75"	1.00"	2.13"	2.15"	2.85"	5.55"	0.88"	4.85"	5.95"
-6	1.54"	5.00"	1.50"	2.63"	3.14"	3.80"	7.75"	1.37"	6.30"	7.85"

*Sizes -1 to -5 are supplied with jam nuts and cotter pins. Larger sizes have cotter pins and standard nuts.

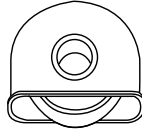


2090 Thornton Street, Ferndale, WA 98248 USA
Tel 01.360.384.4669 | Fax 01.360.384.0572
www.SamsonRope.com

Nylite Spool & Shield

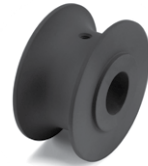
PRODUCT CODE: 969

Nylite spools are lighter than steel. High-performance (HP) spools are available for use with high-performance Class II ropes in sizes -1 through -5.

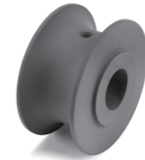


NYLITE SPOOL AND SHIELD

SIZE	DIAMETER inches	CIRCUMFERENCE inches	STANDARD SPOOL	HP SPOOL
			PART NUMBER	PART NUMBER
-1	3/8" – 1/2"	1-1/8" – 1-1/2"	969-0320	969-0321
-2	9/16" – 5/8"	1-3/4" – 2"	969-0400	969-0401
-3	3/4" – 13/16"	2-1/4" – 2-1/2"	969-0520	969-0521
-4	7/8" – 1-1/16"	2-3/4" – 3-1/4"	969-0680	969-0681
-5	1-1/8" – 1-5/16"	3-1/2" – 4"	969-0840	969-0841



Nylite Spool (sizes -1 to -6)



HP Aluminum Spool (sizes -1 to -5)

Nylite Shackle

PRODUCT CODE: 961

Easily installed into or removed from premade soft eyes, the Nylite Shackle takes advantage of the high-strength Nylite connector and synthetic rope. Connectors will not deform or rupture from repeated loadings.

The shackle working load limit (WLL) is stamped on each shackle.



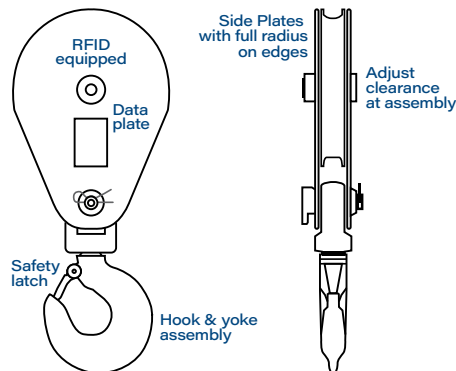
SIZE	PART NUMBER	SHACKLE COATING	FITS ROPE DIAMETER inches	FITS ROPE CIRCUMFERENCE inches	WEIGHT EACH pounds
-1	961-032	Zinc Plated	3/8" – 1/2"	2" – 2-1/4"	0.4 lb
-2	961-040	Zinc Plated	9/16" – 5/8"	2-3/4" – 3"	0.8 lb
-3	961-052	Galvanized	3/4" – 13/16"	3-1/2" – 3-3/4"	1.3 lb
-4	961-068	Galvanized	7/8" – 1-1/16"	4-1/8" – 4-1/2"	3.0 lb
-5	961-084	Galvanized	1-1/8" – 1-5/16"	5" – 5-1/2"	4.8 lb
-6	961-112	Galvanized	1-1/2" – 1-3/4"	5-5/8" – 6"	16 lb

-1 and -2 shackles are Electrolytic Zinc coated per ASTM B633-07 SC2 Type III. Sizes -3 through -6 shackles are hot-dip galvanized per ASTM A123.

Nylite Snatch Block

PRODUCT CODE: 915

The Nylite Snatch Block maximizes a two-part lifting system without overstressing synthetic rope. The exclusive high-strength sheave reduces weight while providing the proper radius and groove shape to eliminate rope wear. The swivel plate has a locking bolt that makes change over easy and fast. The hook swivels under no- or low-load conditions.



PART NUMBER	DIAMETER inches	WORKING LOAD TONS*	WEIGHT EACH pounds
9153211	7/8" – 1-1/8"	8 tons	35 lb

*Nylite Assemblies have working loads listed in tons. All working load values are based on a 4:1 safety factor.



2090 Thornton Street, Ferndale, WA 98248 USA
 Tel 01.360.384.4669 | Fax 01.360.384.0572
www.SamsonRope.com