

Galvanized HD Wire Thimble

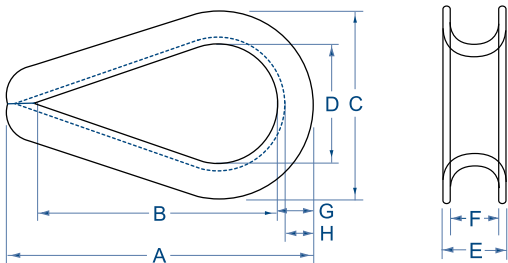


PRODUCT CODE: 924

The Wire Thimble protects against wear and deformation of the rope eye. Designed with the proper bending radius to maintain rope strength and provide longer service life. This thimble meets the performance requirements of Federal Specifications FF-T-276b Type III (except for those provisions required of the contractor.)

| SIZE DESIGNATION Rope Diameter | SIZE DESIGNATION Rope Diameter | A INCHES | B INCHES | C INCHES | D INCHES | E INCHES | F INCHES | G INCHES | H INCHES | Weight POUNDS | Weight KILOGRAMS |
|-----------------------------------|-----------------------------------|-------------|-------------|-------------|-------------|-------------|-------------|-------------|-------------|------------------|---------------------|
| 1/4" | 6 mm | 2.2" | 1.6" | 1.5" | 0.90" | 0.40" | 0.30" | 0.10" | 0.30" | 0.07 lb | 0.03 kg |
| 5/16" | 8 mm | 2.5" | 1.9" | 1.8" | 1.1" | 0.50" | 0.30" | 0.10" | 0.30" | 0.12 lb | 0.05 kg |
| 3/8" | 9 mm | 2.9" | 2.1" | 2.1" | 1.1" | 0.60" | 0.40" | 0.10" | 0.40" | 0.22 lb | 0.10 kg |
| 7/16" | 11 mm | 3.3" | 2.4" | 2.4" | 1.3" | 0.70" | 0.50" | 0.10" | 0.50" | 0.35 lb | 0.16 kg |
| 1/2"- 9/16" | 12 - 14 mm | 3.6" | 2.8" | 2.8" | 1.5" | 0.90" | 0.60" | 0.20" | 0.50" | 0.51 lb | 0.23 kg |
| 5/8" | 16 mm | 4.3" | 3.3" | 3.1" | 1.8" | 1.0" | 0.70" | 0.20" | 0.50" | 0.76 lb | 0.34 kg |
| 3/4" | 18 mm | 5.0" | 3.8" | 3.8" | 2.0" | 1.2" | 0.80" | 0.20" | 0.70" | 1.58 lb | 0.72 kg |
| 7/8" | 22 mm | 5.5" | 4.3" | 4.3" | 2.3" | 1.4" | 0.90" | 0.20" | 0.80" | 1.78 lb | 0.81 kg |
| 1" | 24 mm | 6.1" | 4.5" | 4.8" | 2.5" | 1.6" | 1.1" | 0.30" | 0.90" | 3.14 lb | 1.42 kg |
| 1-1/8"- 1-1/4" | 28 - 30 mm | 7.0" | 5.1" | 5.9" | 2.9" | 1.9" | 1.3" | 0.30" | 1.3" | 4.00 lb | 1.81 kg |
| 1-1/4"- 1-3/8" | 30 - 34 mm | 9.9" | 6.5" | 6.8" | 3.5" | 2.3" | 1.4" | 0.40" | 1.3" | 8.11 lb | 3.68 kg |
| 1-3/8"- 1-1/2" | 34 - 36 mm | 9.0" | 6.3" | 7.1" | 3.5" | 2.6" | 1.6" | 0.50" | 1.3" | 13.0 lb | 5.87 kg |
| 1-5/8" | 40 mm | 11.3" | 8.0" | 8.1" | 4.0" | 3.0" | 1.7" | 0.50" | 1.4" | 17.0 lb | 7.71 kg |
| 1-3/4" | 44 mm | 12.2" | 9.0" | 8.5" | 4.5" | 3.5" | 1.8" | 0.50" | 1.5" | 17.8 lb | 8.05 kg |
| 1-7/8"- 2" | 45 - 48 mm | 15.1" | 12.0" | 10.4" | 6.0" | 3.4" | 2.1" | 0.50" | 1.7" | 27.8 lb | 12.6 kg |
| 2-1/4" | 56 mm | 17.5" | 14.0" | 11.9" | 7.0" | 3.9" | 2.4" | 0.60" | 1.8" | 39.5 lb | 17.9 kg |

Not recommended for use with Class II ropes.



2090 Thornton Street, Ferndale, WA 98248 USA
 Tel 01.360.384.4669 | Fax 01.360.384.0572
www.SamsonRope.com